

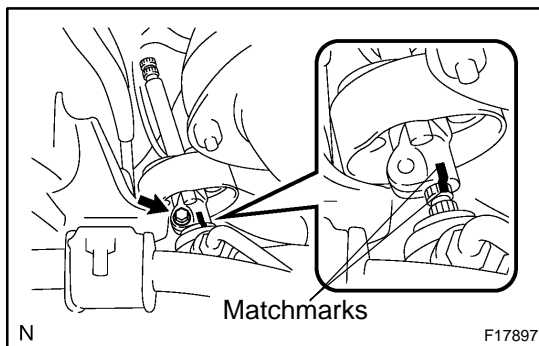
INSTALLATION

NOTICE:

When replacing the steering angle sensor, drive the vehicle straight ahead at a speed of 6.5 mph (10.5 km/h) or more. Accordingly, zero point calibration of the steering angle sensor is performed.

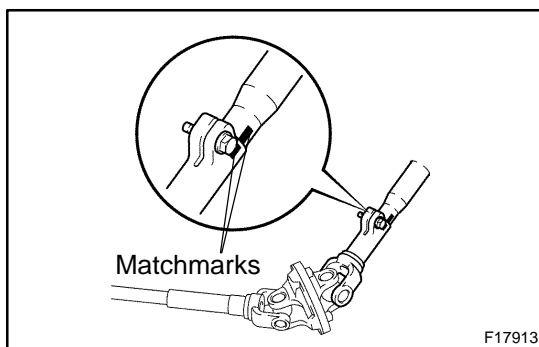
HINT:

If the steering angle sensor zero point calibration is not performed, its value will be fixed. Check after driving the vehicle straight ahead at a speed of 6.5 mph (10.5 km/h) or more (See page [DI-1548](#)).



- 1. INSTALL NO. 2 INTERMEDIATE SHAFT ASSEMBLY**
 - (a) Align the matchmark on the No. 2 intermediate shaft assembly with the one on the control valve shaft.
 - (b) Install the bolt.

Torque: 35 N·m (360 kgf-cm, 26 ft-lbf)



- 2. CONNECT NO. 2 UNIVERSAL JOINT ASSEMBLY**
 - (a) Insert the column hole cover No. 2.
 - (b) Align the matchmarks on the column assembly and No. 2 universal joint assembly.
 - (c) Install the bolt.

Torque: 35 N·m (360 kgf-cm, 26 ft-lbf)

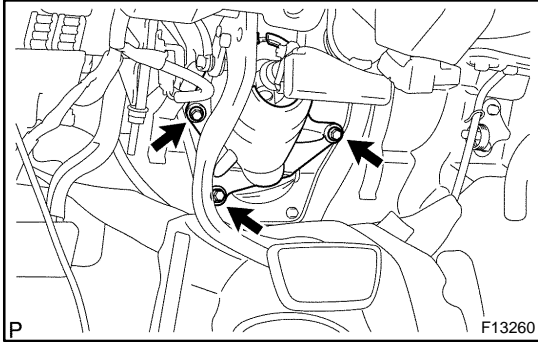
- 3. INSTALL STEERING COLUMN ASSEMBLY WITH NO. 2 UNIVERSAL JOINT ASSEMBLY**

- (a) Install the column assembly with the No. 2 universal joint assembly.
 - (b) Install the 4 steering column set nuts.
 - (c) Connect the connectors.

Torque: 26 N·m (260 kgf-cm, 19 ft-lbf)

- 4. CONNECT TRANSMISSION CONTROL CABLE ASSEMBLY**

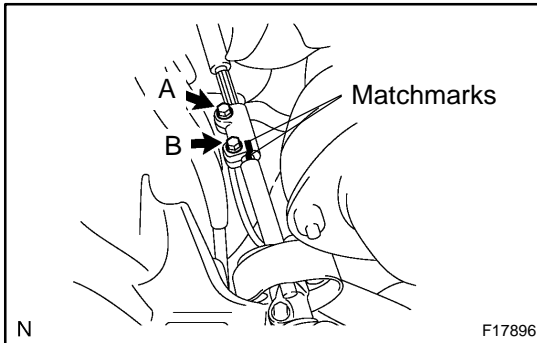
Connect the cable assembly to the shift lever assembly.



5. INSTALL COLUMN HOLE COVER NO. 2

Install the column hole cover No. 2 to the body with the 3 bolts.

Torque: 8.0 N·m (82 kgf·cm, 71 ft·lbf)



6. INSTALL SLIDING YOKE

(a) Align the matchmark on the sliding yoke with the one on the No. 2 intermediate shaft assembly.

(b) Install the "B" bolt.

Torque: 35 N·m (360 kgf·cm, 26 ft·lbf)

(c) Install the "A" bolt.

Torque: 35 N·m (360 kgf·cm, 26 ft·lbf)

7. INSTALL BRAKE PEDAL RETURN SPRING

8. INSTALL NO. 2 HEATER TO REGISTER DUCT

9. INSTALL LOWER LH FINISH PANEL

(a) Install the lower LH finish panel with the 4 bolts.

(b) Connect the hood lock release lever with the 2 screws.

10. INSTALL SPIRAL CABLE (See page [BE-40](#))

11. INSTALL COMBINATION SWITCH WITH SPIRAL CABLE

(a) Install the combination switch with the 3 screws.

(b) Connect the airbag connector.

(c) Connect the 4 connectors.

12. INSTALL UPPER AND LOWER COLUMN COVERS

Install the upper and lower column covers with the 3 screws.

13. CENTER SPIRAL CABLE

(a) Check that the front wheels are facing straight ahead.

(b) Turn the cable counterclockwise by hand until it feels firm.

(c) Then rotate the cable clockwise about 2.5 turns to align the marks.

HINT:

The cable will rotate about 2.5 turns to both the left and right from the center.

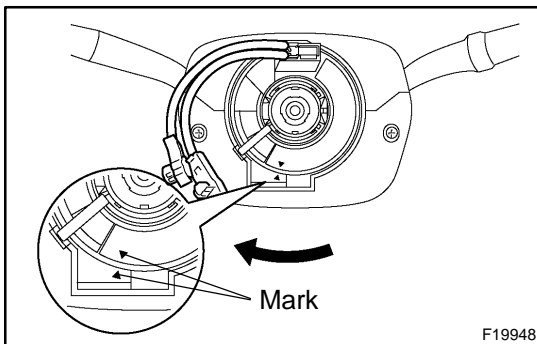
14. INSTALL STEERING WHEEL

(a) Align the matchmarks on the wheel and main shaft.

(b) Install the wheel set nut.

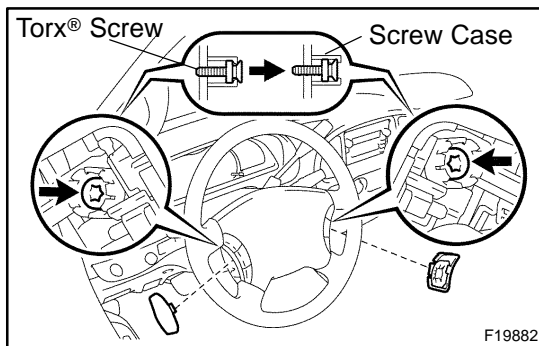
Torque: 50 N·m (510 kgf·cm, 37 ft·lbf)

(c) Connect the connector.



15. INSTALL STEERING WHEEL PAD**NOTICE:**

- Never use airbag parts from another vehicle. When replacing parts, replace with new ones.
- Make sure the wheel pad is installed with the specified torque.
- If the wheel pad has been dropped, or there are cracks, dents or other defects on the case or connector, replace the wheel pad with a new one.
- When installing the wheel pad, take care that the wirings do not interfere with other parts and are not pinched between other parts.
- When installing torx® screws, take care not to scratch other parts (ex. cruise control switch, lower cover) with a torx® socket wrench.



- (a) Connect the airbag connectors and horn terminal.
- (b) Install the wheel pad after confirming that the circumference groove of the torx® screw is caught on the screw case.
- (c) Using a torx® socket wrench, tighten the 2 screws while holding down the upper surface of the wheel pad properly to prevent the wheel pad from floating up.

Torque: 8.8 N·m (90 kgf·cm, 78 in.-lbf)

- (d) Install the steering wheel lower No. 2 cover.
- (e) Install the steering wheel lower No. 3 cover.

16. CHECK STEERING WHEEL CENTER POINT**17. CONNECT CABLE TO NEGATIVE BATTERY TERMINAL**